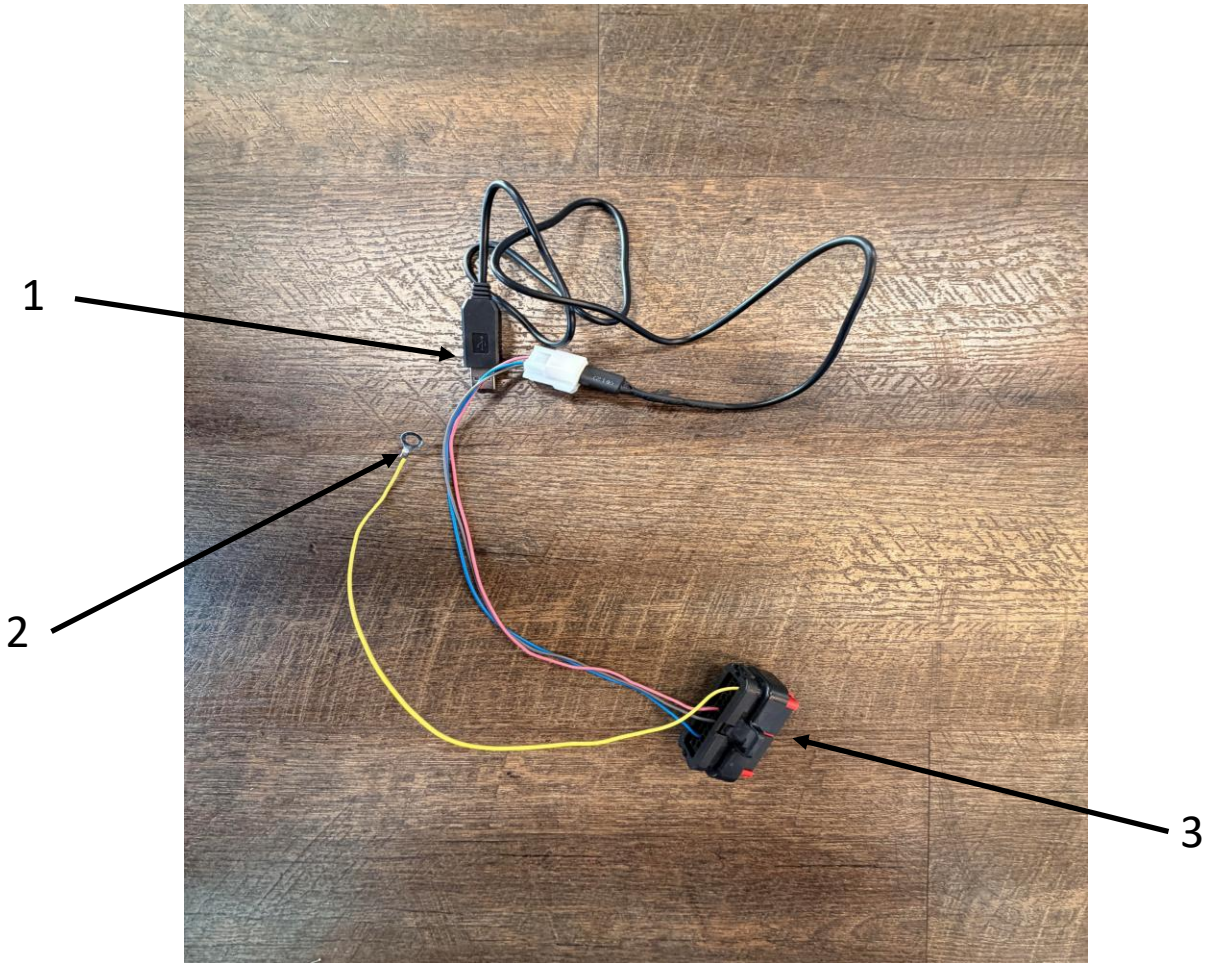


# Programming Manual



# Arion

# Harness



1. USB Cable
2. Power Wire
3. Controller Connector

# How to Connect

## 1. Power Down the Vehicle

Ensure the battery power switch is in the **OFF** position before beginning any work.

## 2. Access the Controller Compartment

Remove the seat to expose the compartment housing the controller.

## 3. Locate the Controller

Identify the controller within the compartment.

- If the controller is not immediately visible, it may be positioned underneath a black protective cover.
- Remove the push-pins securing the front of the cover.
- If equipped with a rear storage tray, remove it to access the rear mounting area.
- Carefully lift and remove the cover to expose the controller.

# How to Connect

## 4. Disconnect the Controller Harness

Locate the connector on the controller that matches connector **(3)** on the harness.

- Using a small tool (e.g., a flat-blade screwdriver), insert the tool into the release pin at the rear of the connector.
- Pull the tool toward the front of the vehicle to release the connector lock, then disconnect the harness from the controller.

## 5. Install the Programming Power Wire

Using a **10mm wrench**, loosen the controller terminal with **two red wires** attached.

- Install power wire **(2)** onto this terminal.
- Re-tighten the terminal securely to ensure proper electrical contact.

## 6. Restore Power and Connect USB

Switch the battery power **ON**.

Connect USB cable **(1)** from the controller interface to your computer.

# Geruosi Software Installation & Activation Procedure

## 1. Download Software Package

- Click the provided download link to obtain the Geruosi controller software package.
- Save the file to a known location on your computer (e.g., Desktop or Downloads folder).

## 2. Extract Software Files

- Locate the downloaded compressed file.
- Right-click and select **Extract All...** (or use a compatible extraction tool).
- Choose a destination folder and complete the extraction process.

## 3. Launch Program

- Open the extracted folder.
- Locate and double-click **Cardriver.exe** to launch the program.

# Geruosi Software Installation & Activation Procedure

## 4. Initial Activation

- On first launch, the software will display a two-line verification window (shown on the next page).
- Copy or record the **first line** displayed (activation request code).
- Provide this first-line code to our support team to receive your activation response code.

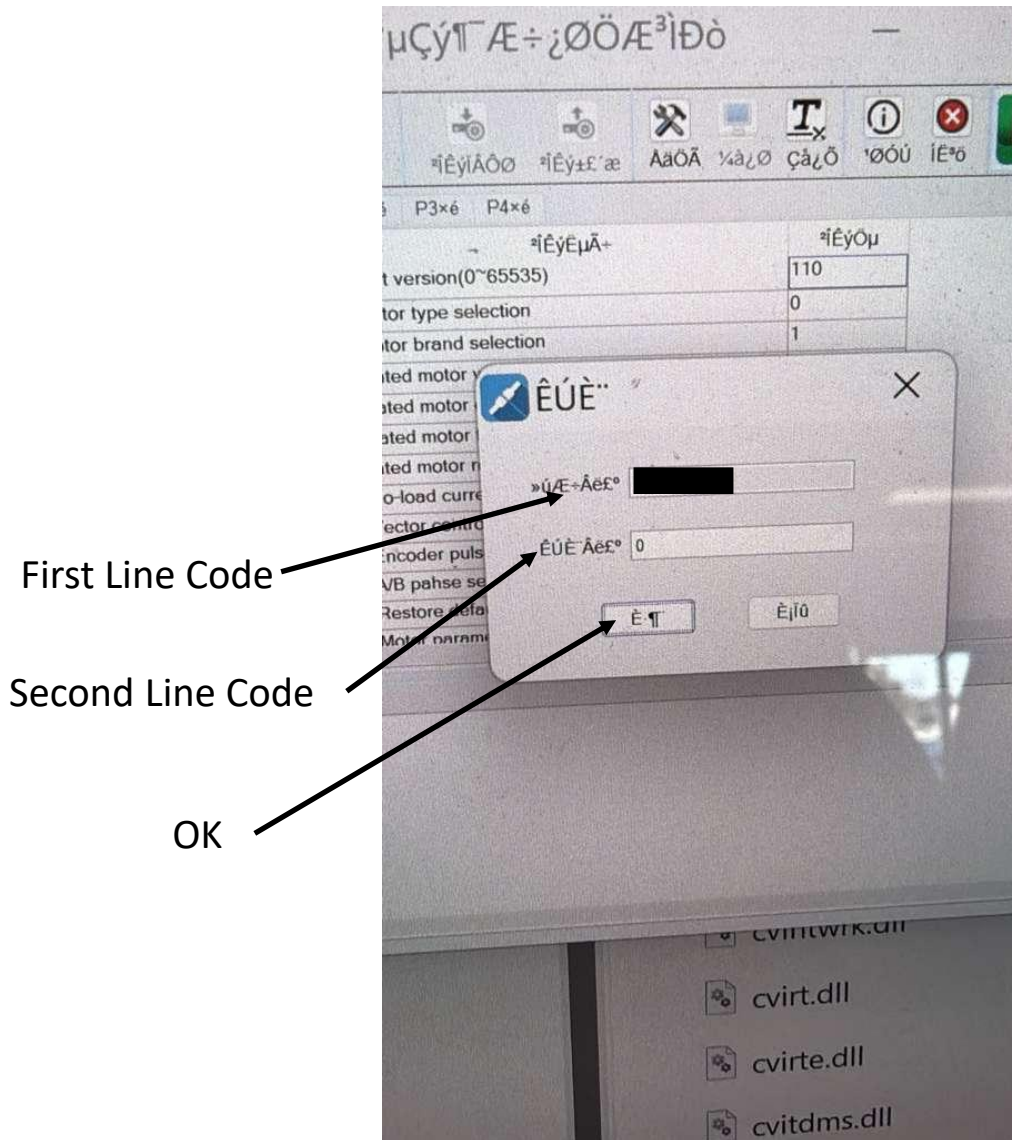
## 5. Enter Verification Code

- Enter the response code provided by our team into the **second line** of the verification window.
- Select **OK** to complete activation.

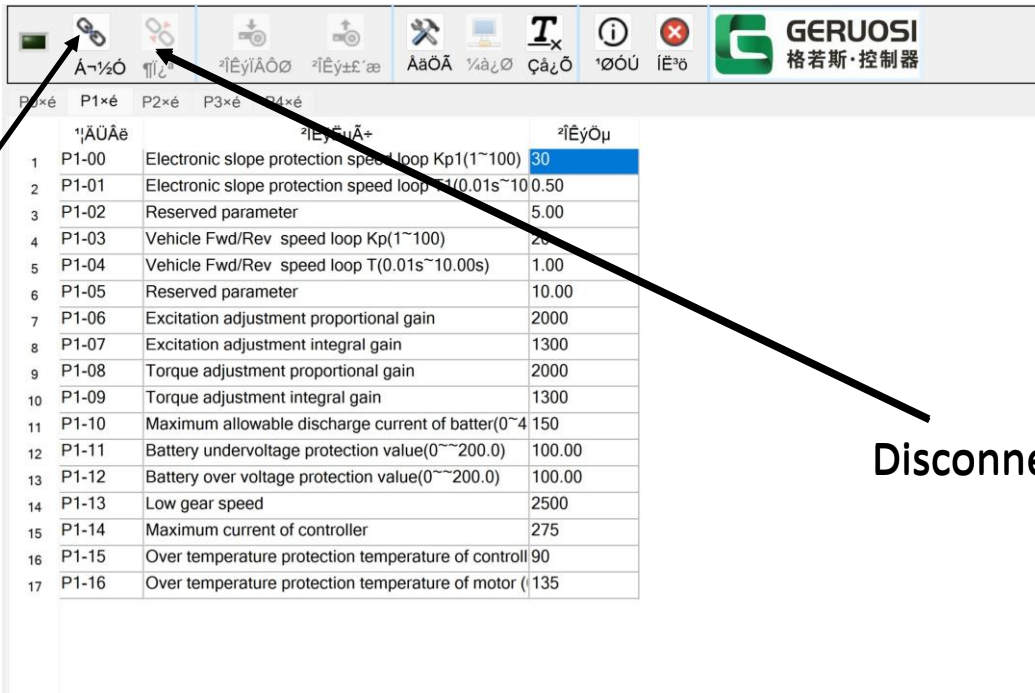
## 6. Confirm Access

- Once verified, the software will open normally, and you will have full access to the programming interface.
- Activation is only required on the first startup.

# Geruosi Software Installation & Activation Procedure



# Programming Software



## 1. Establish Communication With Controller

Launch the controller programming software on your computer.

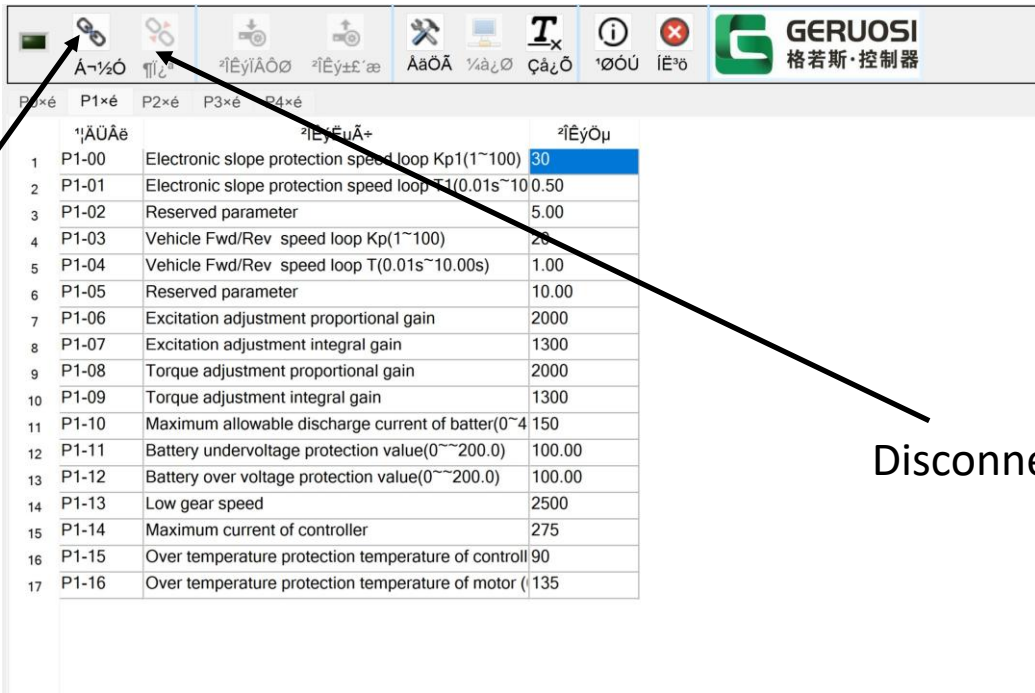
Click **Connect** to establish communication with the controller.

Once connected, the software will automatically load the current controller parameters.

## 2. Navigate to Parameter Pages

- Once connected, navigate through the parameter pages (**P1** through **P4**) using the software menu.
- Review all relevant configuration fields on each page before making changes.

# Programming Software



### 3. Edit Required Parameters

- Modify the required parameters and ensure that they are within the required values

### 4. Save & Exit

- Press **Disconnect** to safely terminate communication with the controller.
- Close the software application.

# Programming Software

The screenshot shows the GERUOSI programming software interface. At the top, there is a toolbar with several icons. An arrow labeled "Connect" points to the first icon (a plug), and another arrow labeled "Disconnect" points to the second icon (a plug with a red X). Below the toolbar is a table of parameters. The table has columns for parameter ID, name, and value. The value column is highlighted in blue.

	P1×é	P2×é	P3×é	P4×é
	1'ÄÜÄë	²ÉýíÄÖØ	²Éý±£'æ	²ÉýÖµ
1	P1-00	Electronic slope protection speed loop Kp1(1~100)	30	
2	P1-01	Electronic slope protection speed loop T1(0.01s~10)	0.50	
3	P1-02	Reserved parameter	5.00	
4	P1-03	Vehicle Fwd/Rev speed loop Kp(1~100)	25	
5	P1-04	Vehicle Fwd/Rev speed loop T(0.01s~10.00s)	1.00	
6	P1-05	Reserved parameter	10.00	
7	P1-06	Excitation adjustment proportional gain	2000	
8	P1-07	Excitation adjustment integral gain	1300	
9	P1-08	Torque adjustment proportional gain	2000	
10	P1-09	Torque adjustment integral gain	1300	
11	P1-10	Maximum allowable discharge current of batter(0~4	150	
12	P1-11	Battery undervoltage protection value(0~200.0)	100.00	
13	P1-12	Battery over voltage protection value(0~200.0)	100.00	
14	P1-13	Low gear speed	2500	
15	P1-14	Maximum current of controller	275	
16	P1-15	Over temperature protection temperature of controll	90	
17	P1-16	Over temperature protection temperature of motor (	135	

## 5. Final Steps

- Turn battery power **OFF**.
- Remove the programming cable and restore all vehicle components previously removed.
- Turn battery power **ON** and verify proper vehicle operation.